

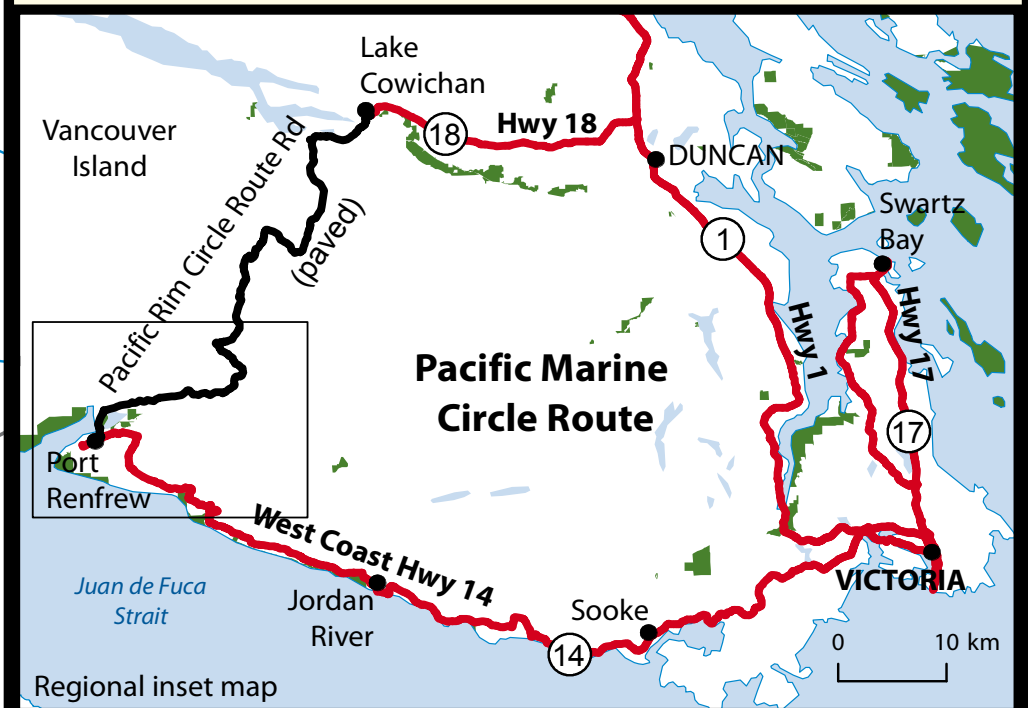
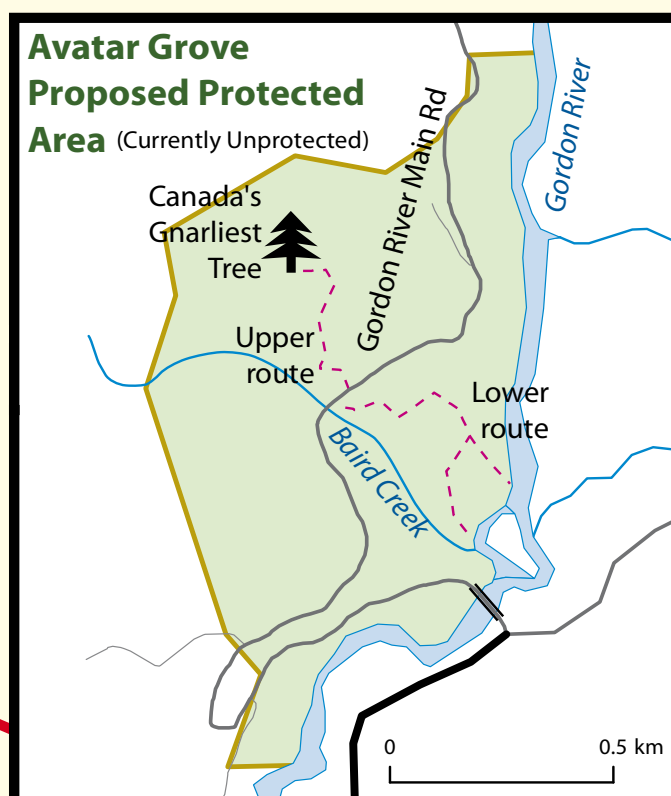
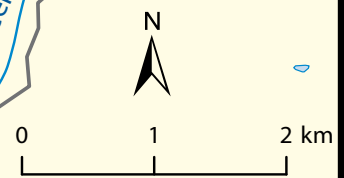
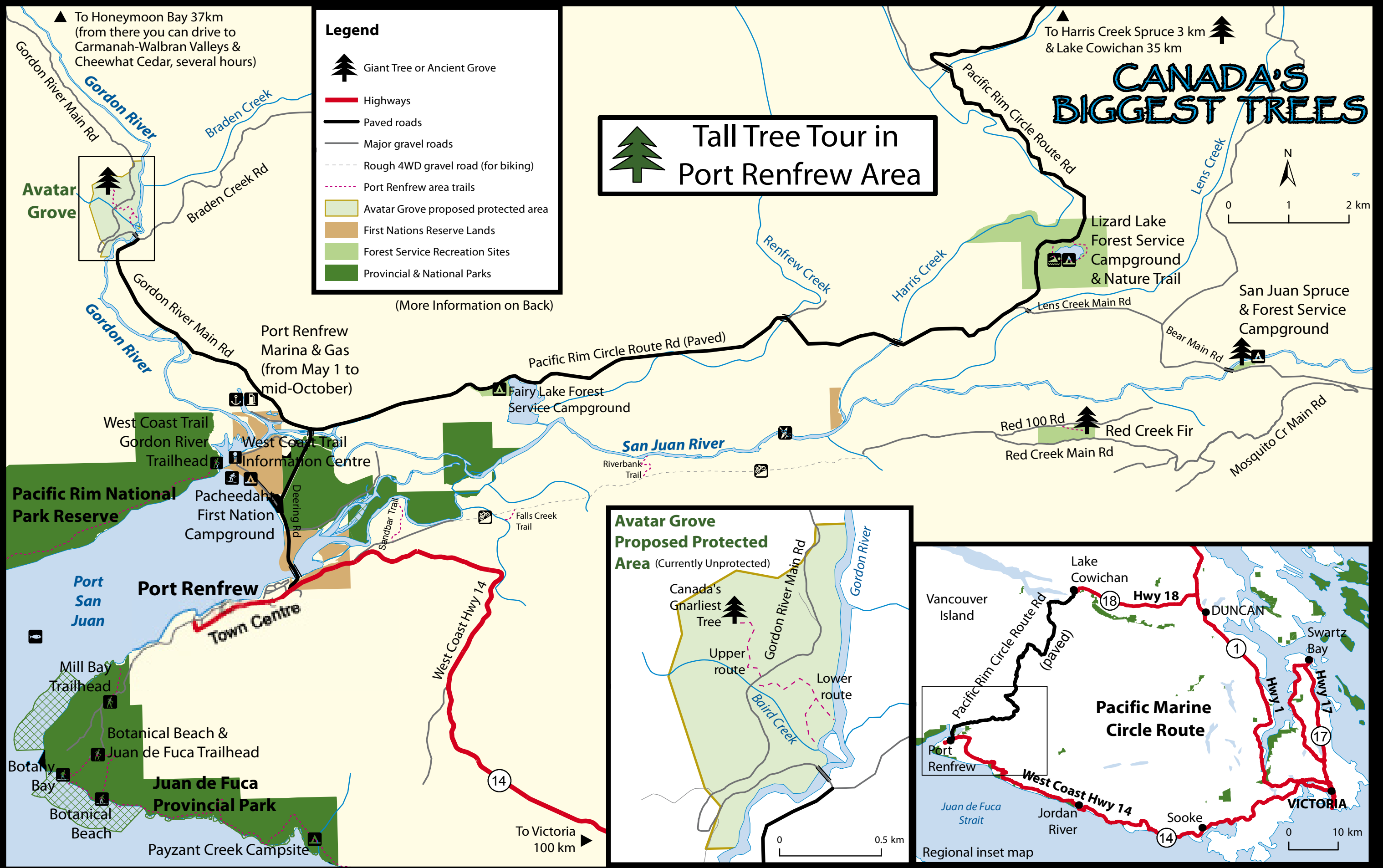
# CANADA'S BIGGEST TREES

## Tall Tree Tour in Port Renfrew Area

**Legend**

- Giant Tree or Ancient Grove
- Highways
- Paved roads
- Major gravel roads
- Rough 4WD gravel road (for biking)
- Port Renfrew area trails
- Avatar Grove proposed protected area
- First Nations Reserve Lands
- Forest Service Recreation Sites
- Provincial & National Parks

(More Information on Back)



▲ To Honeymoon Bay 37km  
(from there you can drive to Carmanah-Walbran Valleys & Cheewhat Cedar, several hours)

▲ To Harris Creek Spruce 3 km  
& Lake Cowichan 35 km

Port Renfrew Marina & Gas  
(from May 1 to mid-October)

West Coast Trail  
Gordon River Trailhead  
Information Centre  
Pacheedaht First Nation Campground

Lizard Lake Forest Service Campground & Nature Trail

San Juan Spruce & Forest Service Campground

Red 100 Rd  
Red Creek Fir  
Red Creek Main Rd

▲ To Victoria 100 km

Juan de Fuca Provincial Park

Payzant Creek Campsite



# PORT RENFREW: HOME OF CANADA'S BIGGEST TREES

Port Renfrew on the west coast of Vancouver Island is the "Big Trees Capital" of Canada. Close to this charming little sea-side town grows the world's largest living Douglas fir tree, the massive Red Creek fir. It is a wonder to behold. En route to the Red Creek fir is Canada's largest Sitka spruce, the San Juan Spruce, its massive limbs draped with mosses and ferns. Also close by is the amazing Avatar Grove, the "Cathedral Grove of Port Renfrew". Farther north from Avatar Grove are the magnificent ancient rainforests of Carmanah Valley Provincial Park, the partially protected Walbran Valley, and Pacific Rim National Park Reserve, home to Canada's largest tree, the Cheewhat cedar.

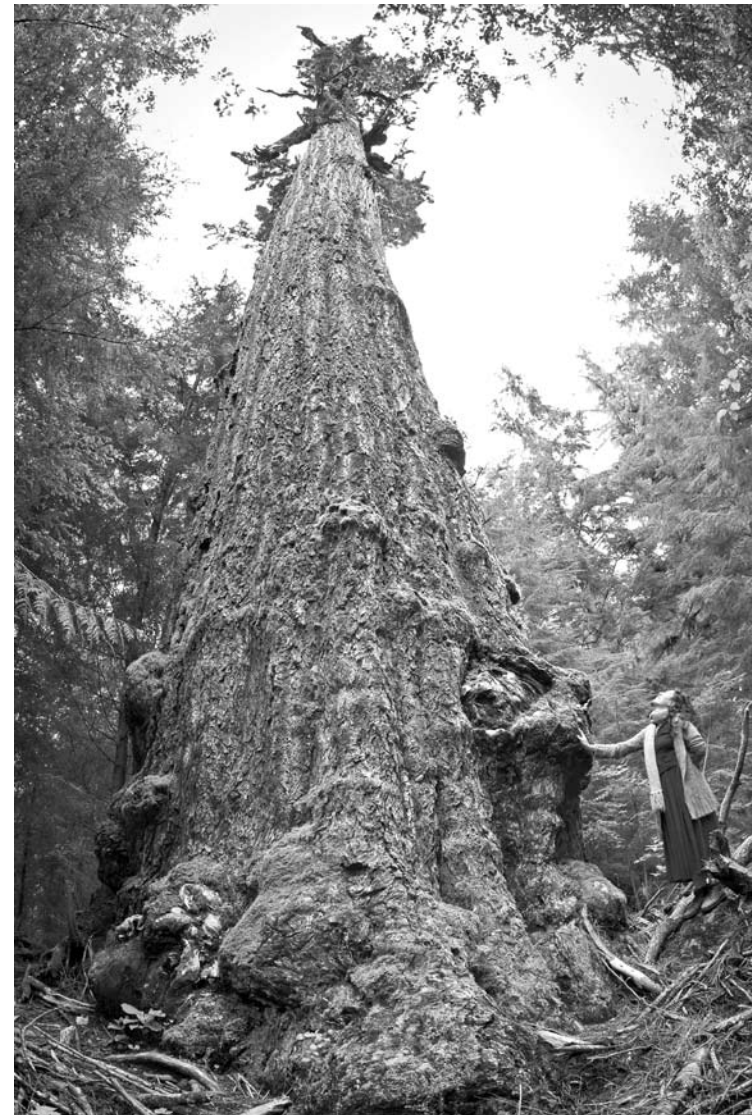
The world-renowned Avatar Grove, just a 20 minute drive from Port Renfrew along good gravel roads, has become a major tourist destination since it was found and popularized in 2010. It is one of only a few easily accessible stands of monumental old-growth trees left uncut in B.C. Avatar Grove is filled with some of Canada's largest western red cedars, Douglas firs, and Sitka spruce trees. Many of the cedars have massive, odd-shaped "burls" growing on their trunks, including "Canada's Gnarliest Tree" found in the Upper Avatar Grove. This Grove is home to bears, wolves, cougars, deer, and elk. It is in the Pacheedaht First Nations' traditional territory. As of June, 2011, the Avatar Grove was still unprotected from logging.

Already 90% of ancient forests on southern Vancouver Island have been logged. Ancient forests on Vancouver Island are important for endangered species survival, stabilizing the climate through carbon sequestration, a vibrant tourism industry, and to sustain First Nations cultures.

## Red Creek Fir: World's Largest Douglas Fir

GPS for Red Creek Fir Parking: Lat = 48.57990; Lon = -124.22639

The Red Creek Fir measures 13.3m (43.7) feet in circumference, 4.3m (14 feet) in diameter, and 73.8m (242 feet) tall. The Red Creek Fir has been estimated to be about 750 years to 1,000 years old. This tree is a survivor of a stand of Douglas firs that became established sometime after a forest fire that occurred ca. 635 A.D.



The Ancient Forest Alliance, a non-profit organization, is working with local businesses to protect the last remaining pockets of old-growth forests in the Port Renfrew region and to ensure the sustainable logging of second-growth forests. To help protect these forests please sign our petition at [www.ancientforestpetition.com](http://www.ancientforestpetition.com) and visit [www.ancientforestalliance.org](http://www.ancientforestalliance.org)

## Driving Directions from from Port Renfrew to Red Creek Fir:

(one way driving time about 1hr 15 min)

1. **km 0.0** - start at the Port Renfrew Community Center/Fire Station and drive down Deering Rd **0.2 km**
2. **km 0.2** - continue over the big San Juan River bridge **1.1 km**
3. **km 1.4** - turn right at fork and continue for **1.4 km**
4. **km 2.7** - cross Deering Bridge and turn right (\* To reach Avatar Grove instead, turn LEFT after the bridge at the "T" intersection then follow directions on opposite page) and proceed **8.6 km** towards Lake Cowichan and Lizard Lake
5. **km 11.2** - keep right at Renfrew Creek Bridge and continue **4.6 km**
6. **km 15.7** - turn right at 9 Mile Junction onto Len's Creek Main (\*\*start of gravel road) to bridge
7. **km 15.9** - cross bridge and proceed **2.2 km**
8. **km 18.0** - turn right at fork (Len's Triangle) onto Bear Main for **0.3 km**
9. **km 18.4** - cross bridge and continue **2.0 km** to San Juan Campground and San Juan Sitka Spruce (Canada's Largest)
10. **km 20.2** - continue straight **1.8 km** past the San Juan Spruce
11. **km 22.1** - turn right at Mosquito Creek Main for **2.4 km**
12. **km 24.5** - keep right **1.3 km** past "T" in the road
13. **km 25.8** - keep right **0.7 km** past fork
14. **km 26.5** - continue straight **3.3 km** on Red Creek Main at fork (**Do Not Take Branch Red 2000.**)
15. **km 29.8** - turn right at "T" onto discontinued logging road for **1 km** and find the start of the trail. It is a 10-15 minute hike to the Red Creek Fir, the largest living Douglas Fir in the world!

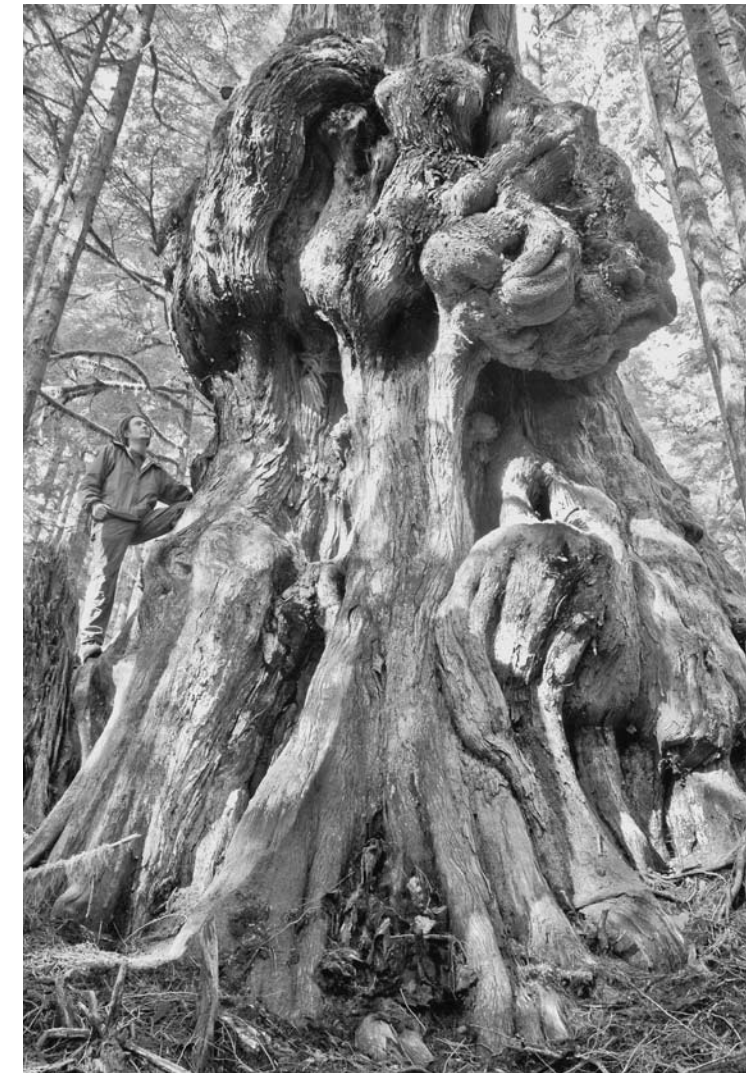
**\*\*Please take note regarding driving to the Red Creek Fir:** The gravel logging roads from Len's Main on are rarely maintained or not maintained at all. Use at your own risk. It is recommended that you have enough gas, a spare tire which is in good condition (and that you know how to change a flat tire). It is always wise when travelling in the backcountry to let someone know where you intend to go and when you will be back. In the event you have car trouble, stay with your vehicle. It is best to visit the Red Creek Fir in the morning as the road is rarely travelled after dark. Those driving rental cars should be aware of rental contracts regarding travel on logging roads. This route is not recommended for vehicles with low clearance (compacts, sub compacts, sports cars etc.) SUVs, Pickups and 4x4s are best!!

## \*Directions to Avatar Grove (continued from Red Creek Fir Direction #4 - on left)

5. After turning left at the "T" intersection stay on the paved Gordon River Main road and after approximately 5 km the road will become gravel and you will hit a "Y" where you go LEFT and cross a high bridge over the beautiful Gordon River.
6. After crossing the bridge keep on the Gordon River Main for about 1.5 km staying to the right.
7. You will pass a small white 42 km mark sign and shortly thereafter you'll cross over a little bridge at Baird Creek. Park your vehicle on the right side of the road soon after the bridge where you will see bunches of flagging tape.
8. Find the route into the forest down on the right hand side of the road into the Lower Avatar Grove, where you will find many huge red cedars, including the "Second Gnarliest Tree" in the Grove, and a few giant Douglas firs.
9. Find the route up the embankment on the left side of the road into the forest (steep - be careful!) and hike into the Upper Avatar Grove, and see "Canada's Gnarliest Tree"!!!

**\* Please note Avatar Grove is a WILDERNESS AREA with no formal trails. Moderate hiking ability and good balance is necessary.**

## Canada's Gnarliest Tree: Upper Avatar Grove



## Harris Creek Spruce

This giant Sitka grows just off the Harris Creek Main. A short trail has been cut to the tree, which is about 4 m (13 ft) in diameter. There is a sign and a pullout at the trailhead.

This publication was made possible through a grant from ActionInTime, a BC society that conducts timely research and public educational campaigns on critical social and environmental issues to protect people and the planet. Map by Geoffrey Senichenko. Photos by TJ Watt. Printed in Vancouver, Canada by Navigator Communications on oldgrowth free, recycled paper. Copyrighted 2011. For more info go to [www.portrenfrewcommunity.com](http://www.portrenfrewcommunity.com) and phone the Chamber of Commerce Info Centre at 250-412-6101.

## San Juan Sitka Spruce: Canada's Largest Spruce Tree

To reach the San Juan Spruce, follow the Red Creek Fir driving directions #1-9.

GPS: Lat = 48.587922; Lon = -124.18663

The giant tree growing by the bridge in the San Juan Bridge Recreation Site is Canada's largest Sitka Spruce tree, based on the tree's volume of wood. It has a circumference of 11.6 m (38 feet) and a height of 62.5 m (205 feet).

**Campsites available in Forest Service Campground.**

